
Tired of this?





When you could have
this in your backyard?





Hiring

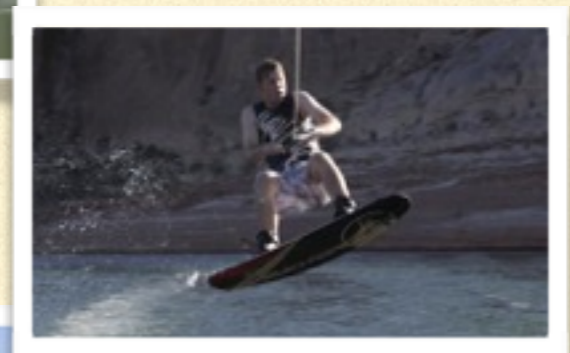
We are looking for the right person to join our southern Utah Northern Arizona practice. We are a mixed practice that is primarily a small animal practice with 80% dogs, 19% cats and 1% horses and everything else. We work Monday through Friday from 8 am to 5 pm (with an hour for lunch at noon). Surgery is typically done first thing in the morning from 8 am to 10 am with an average of three surgeries (spays, neuters, dental prophylaxis, etc..) per day. We see appointments every 20 minutes from 10 am to 12 noon and then from 1 pm to 5 pm.

We have one receptionist and two technicians (non-certified) on duty at any given time. The hospital has digital radiography, surgical laser (Aesculight), therapy laser (Companion Animal), in-house lab equipment (Abaxis), a dental unit with high speed (Dentalaire), bone plating equipment, three anesthesia units and dental radiography. There are three exam rooms and a large treatment area with two wet tables.

This is a busy practice that requires an experienced veterinarian who can work at a brisk pace if needed. Surgical skills are required. Some mentoring will be available.

Page, Arizona is a community of eight thousand but sees more than three million visitors a year that come to see beautiful Lake Powell. We have several scenic fun spots including Antelope Canyon (the number two destination spot in the US from Europe and Asia now), Horseshoe Bend, Rainbow Bridge and Ahlstrom Point. The famed Colorado River trips all begin in Page. We are about two hours from the Grand Canyon, Zion National Park, Bryce National Park and Monument Valley. We have a beautiful 18 hole Championship golf course and the best sushi bar in Arizona (Blue Buddha).

Page is located in northern Arizona between the Glen Canyon National Recreation Area and the Navajo Indian Reservation. The Glen Canyon Dam located at Page backs up the 180 mile lake with over 2000 miles of shoreline. It provides excellent fishing, swimming, skiing and unparalleled sight seeing. Kanab is our nearest neighbor 74 miles northwest while Flagstaff is our next neighbor 130 miles south.





FOR MORE INFORMATION CONTACT:

Dr Ballard
435-899-0088
ballardvet@gmail.com